

# MMC-001

## *Manual Mobile Coiler with Measurer Options*



Ideal for manually coiling small diameter material

### **Standard Features**

- 31" Turntable with four adjustable pins to hold coil in place
- Center pin for holding reels
- 10" ID x 20" OD x 4.5" wide collapsible coiler with positive locking device
- Tool tray for holding cutters, tape, and miscellaneous items
- Casters with floor locks for easy mobility

# MMC-001

## *Manual Mobile Coiler with Measurer Options*



Compatible with 3100M and 1700  
Measurers and either FT/IN or  
Metric Counters





# Installation, Operation & Maintenance Manual for the

## MANUAL MOBILE COILING CART



MNL-0017-A-0221

5101 S. Council Road, Suite 100 • Oklahoma City, Ok 73179 • 405.672.0000

Email: [sales@reelpower.com](mailto:sales@reelpower.com) • Website: [www.reelpowerind.com](http://www.reelpowerind.com)

## TABLE OF CONTENTS

General Information .....	2
Warranty .....	2
Limited Warranty .....	2
Limitation of Liability .....	3
Warranty Replacement Parts Process .....	3
Safety Information .....	4
Warnings .....	4
General Description .....	5
Setup .....	5
Loading Procedure .....	6
Maintenance .....	9
Contact Information .....	9

## GENERAL INFORMATION

This manual is designed to serve as the operation, and maintenance guide for your machine. The contents of this manual should be carefully read before attempting any phase of operation, or maintenance. Failure to follow the procedures outlined here in could result in personal injury or equipment damage.

All information, specifications and illustrations within this manual are those in effect at the time of printings. **Reel Power Industrial** reserves the right to change or make improvements without incurring any obligation to make changes or add improvements to products previously sold.

## WARRANTY

### LIMITED WARRANTY

The goods ordered and agreed to be furnished by Vendor are warranted against defects in material or workmanship for a period of one year following the date of shipment. Vendor's obligation under this warranty is limited to repair or replacement, at Vendor's option, of the defective goods at Vendor's factory (point of shipment) and does not extend to goods other than those manufactured by Vendor. This warranty shall not apply to any goods which have been

subject to misuse, negligence, accident, or attempted or unauthorized repair or modification or are considered by Vendor to be damaged as a result of normal "wear and tear". Vendor may provide technical information or advice to assist Customer in the proper application and utilization of goods, in which case Vendor disclaims all warranties, express or implied, including without limitation implied warranties of merchantability or fitness for a particular purpose, or compliance with governmental regulations to which customer is subject.

Vendor warrants that for a period of one year beginning on the date of invoice, service labor by Vendor technicians shall be free from defects in workmanship. This warranty does not cover damage due to external causes including without limitation accident, abuse, misuse, problems with electrical power, servicing not authorized by Vendor, usage not in accordance with product instructions, failure to perform required preventive maintenance and problems caused by use of parts and components not supplied by Vendor. Vendor's responsibility is limited to repair or replacement at Vendor's option at its designated facility. This warranty does not cover replacement or repair of materials due to normal "wear and tear."

OTHER THAN AS SPECIFICALLY SET FORTH ABOVE, VENDOR MAKES NO EXPRESS OR IMPLIED WARRANTIES, INCLUDING, WITHOUT LIMITATION, ANY IMPLIED WARRANTIES OF MERCHANTABILITY OR FITNESS FOR A PARTICULAR PURPOSE, ON GOODS OBTAINED FROM VENDOR, AND VENDOR DISCLAIMS ALL SUCH WARRANTIES. FURTHERMORE, NO PERSONNEL OF VENDOR ARE AUTHORIZED TO MAKE WARRANTIES OF ANY NATURE, VERBALLY OR OTHERWISE. ANY ADDITIONAL WARRANTIES MUST BE MADE IN WRITING AND SIGNED BY AUTHORIZED PERSONNEL OF VENDOR IN ORDER TO BE BINDING UPON VENDOR.

## LIMITATION OF LIABILITY

In no event shall vendor be liable for any special, indirect, exemplary, incidental, consequential, or punitive losses or damages (including, without limitation, business interruption, lost revenue or profits, fees or fines), even if vendor has been advised or made aware of the possibility of any such losses or damages and regardless of whether the claim is based on contract, tort, strict liability, or other theory of liability. Vendor's cumulative liability for all losses and damages under these terms (including, without limitation, damages arising under a theory of contract, tort (including negligence), strict liability, express or implied warranties, etc.) Shall not exceed (a) in the case of any services provided or to be provided by vendor, the amount of the fees payable by customer for such services, and (b) in the case of any goods provided or to be provided by vendor, the full amount of vendor's labor and/or services associated with the sale of the goods.

## WARRANTY REPLACEMENT PARTS PROCESS






Please note, Reel Power Industrial's responsibility is limited to furnishing the customer replacement parts at no cost. The customer is responsible for outward shipping costs, labor to remove and install the part.

The customer may choose to send the reportedly defective part to The Seller for inspection, freight prepaid. Upon inspection, The Seller will either send a new replacement part, return repaired part, freight prepaid, or, if part found non-defective, return the part to customer, freight collect.

If the part is required immediately, a replacement part may be shipped to customer immediately. A customer purchase order is required prior to shipment of warranty replacement parts. The replacement part will be shipped via customer specified freight service, freight collect. The customer is required to return the reportedly defective parts to Oklahoma City, Oklahoma at The Seller's expense, per The Seller's specified freight carrier. When the part(s) is received, inspected, and the manufacturer's defect is confirmed, the invoice for the warranty part will be credited. If no defect is found, the original part will be returned to the customer, freight collect and an invoice against the customer's PO will be issued for the replacement part already sent.

## SAFETY INFORMATION

### WARNINGS

-  **WARNING:** All operating personnel must read and understand all safety and procedures prior to the start of equipment operation.
-  **WARNING:** Always be sure to use wheel/floor locks or implement measures to secure the mobile coiling cart against unintentional movement.
-  **WARNING:** Operate equipment with caution. Pay particular attention to pinch points, rotating or moving components.
-  **WARNING:** Do not operate equipment while wearing loose clothes, jewelry, long hair, facial hair, keychains, etc.
-  **WARNING:** Moving and lifting heavy reels/coils may cause back injury and/or foot hazards. Always utilize proper lifting techniques and PPE (steel-toe shoes, etc.)

## GENERAL DESCRIPTION

MMC-001 Manual Mobile Coiling Cart includes:

- Mobile unit with caster wheels and two (2) stationary floor locks.
- 31" turntable with 4 adjustable pins to hold coil in place.
- (1) Removable center spindle used to hold reels in place.
- (4) Removable coil arms
- Collapsible, manual/hand-crank coiler with positive locking device
- Optional 3100M/1700 measurer with ft./in./metric counter
- Tool tray

Specifications:

- 31" turntable weight capacity: 150 lbs. maximum
- Hand crank coiler ID: 10 in. diameter
- Hand crank coiler ID: 20 in. diameter

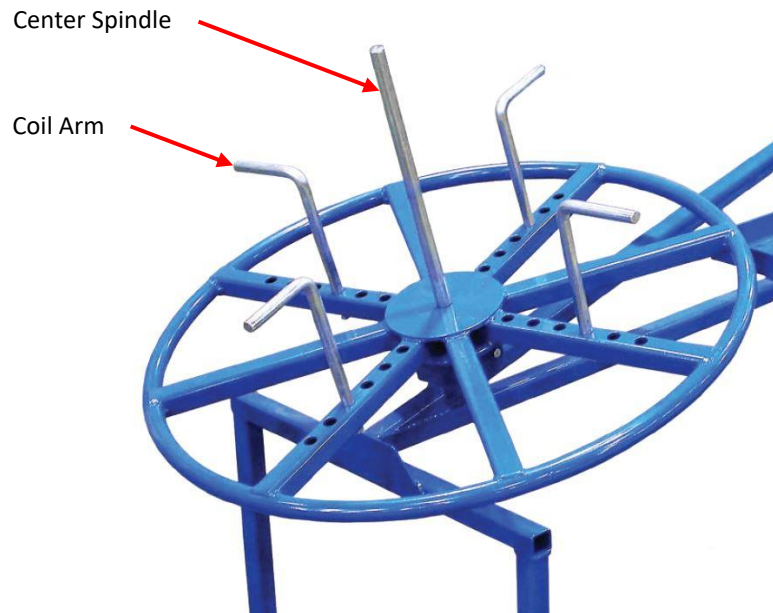
## SETUP

1. Unpack all parts while checking for damage from shipping.
2. Place and assemble the unit in the area it is to be used.
3. Prior to use, secure firmly to the floor using the floor locks for mobile units or lagging bolts for stationary units.

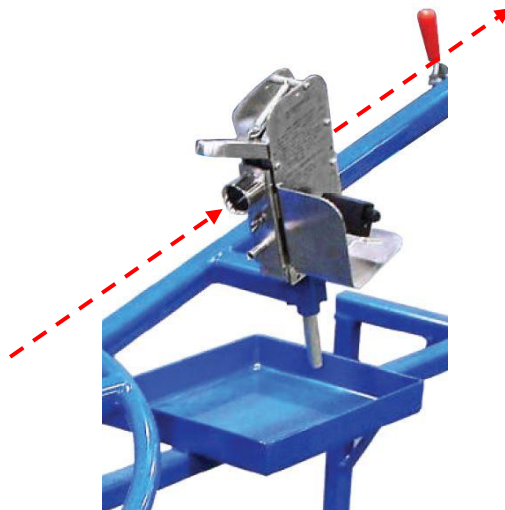


## LOADING PROCEDURE

1. Place loose coil, spool, or wire onto the turntable. If using coils adjust coil arms to fit the ID of the coil to hold in place. If you are using a spool, simply slide the spool over the center spindle and set the coiler arms aside.



2. The #3100 measurer has the following instructions engraved on the side plate of the measurer:
  - a. Press spring handle down and insert product all the way through the tube and output guide.
  - b. ALWAYS RESET YOUR COUNTER TO ZERO.
  - c. Pull on the material evenly, and not abruptly.
  - d. Mark and cut material at output guide.



3. After the material is fed through the measurer, attach the wire end to the coiling head.



Material  
attachment for  
coiling head

4. Manually hand crank the amount of material to be coiled.
5. Once desired length is reached, engage the red handle on the back side of the coiler to hold coiler in place.

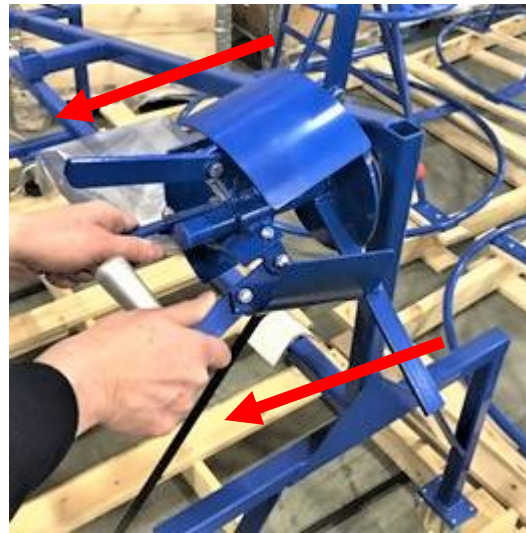
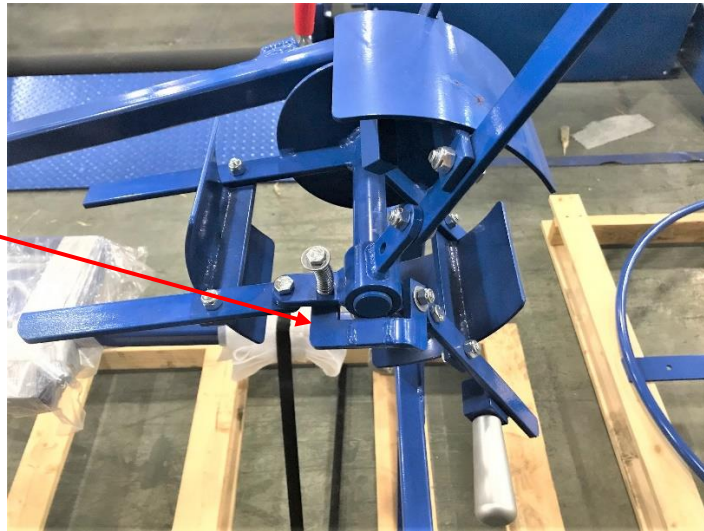


Engage coiling  
head lock

6. Now tape, tie, or finish the coil of material on the coiling head and cut wire at the desired length.

7. Collapse coiling head by engaging spring latch on the center of coiler, remove coil of material, snap coiler back into ready position. Repeat process for another coil of material, making sure to reset the counter at the exit end of the measurer.

Press down on  
spring latch  
with thumb



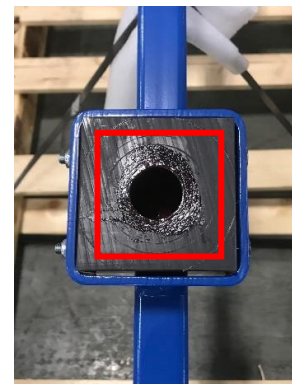
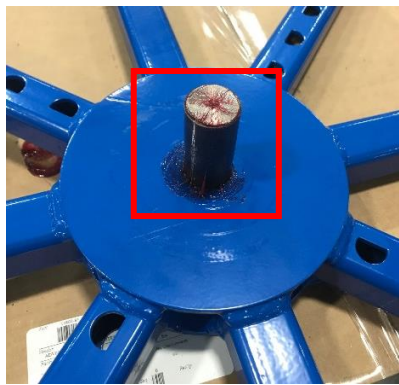
**NOTE:** After pressing down and disengaging spring latch with thumb, grab coiling head retaining arms and pull towards operator while sliding center of coiling head forward, away from operator, collapsing retaining arms to center and allowing material to be removed.

## MAINTENANCE

The mobile coiling cart has been designed to require a minimum amount of maintenance, but a regularly maintained machine will prolong the life of the equipment.

Normal use: Five (5) Eight-hour days per week.

Suggested Lubrication schedule: Bearing and nylon block every six (6) months with Superfilm Hi-temp #2 general high-temp grease.



Lubrication Points

## CONTACT INFORMATION

### Reel Power Industrial

5101 S Council Road, Suite 100  
Oklahoma City, Oklahoma 73179

Toll Free: 888-873-4000  
Tel: 405-672-0000  
Fax: 405-672-7200

Website: [Reelpowerind.com](http://Reelpowerind.com)  
Email: [sales@reelpowerind.com](mailto:sales@reelpowerind.com)