

SSTU-002 Automatic Reeling & Coiling System



Single Shafted Take Up - Low Tension Applications



SINGLE SHAFTED TAKE UP

MARKETS COVERED

- Medical
- Catheter
- Silicone
- Profile

STANDARD FEATURES INCLUDE

- Heavy gauge sheet metal cabinet
- 3 axis servo drive
- Spindle maximum weight (50lb)
- Precision level wind
- Handles up to 20" OD and 10" wide spools
- Articulating guide arms indexes up every layer
- Complete with 10" HMI touch screen
- Adjustable material guide arms
- Anti-vibration pads
- Mobility features
- 480 VAC 3 phase (other voltages optional)
- Customized speeds as needed
- Clean room ready



**EASY ACCESS SAFETY
INTERLOCK DOORS**

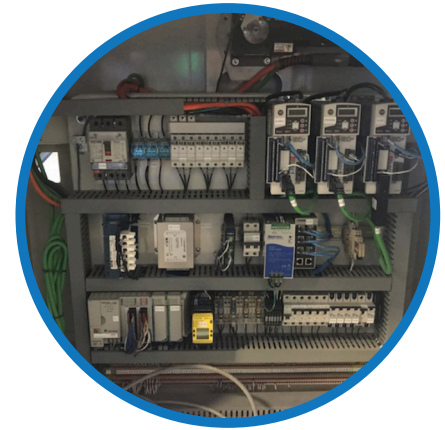
SSTU-002 Automatic Reeling & Coiling System



Single Shafted Take Up - Low Tension Applications



VERY LOW TENSION DANCER



INTEGRATED ELECTRICAL PANEL



SSTU SHOWN WITH SPOOL

Options

- Customized speeds
- Coiling Heads (Custom per application)
- Different Colors (Optional)
- Stainless steel cabinet (Optional)
- Safety guarding and fencing