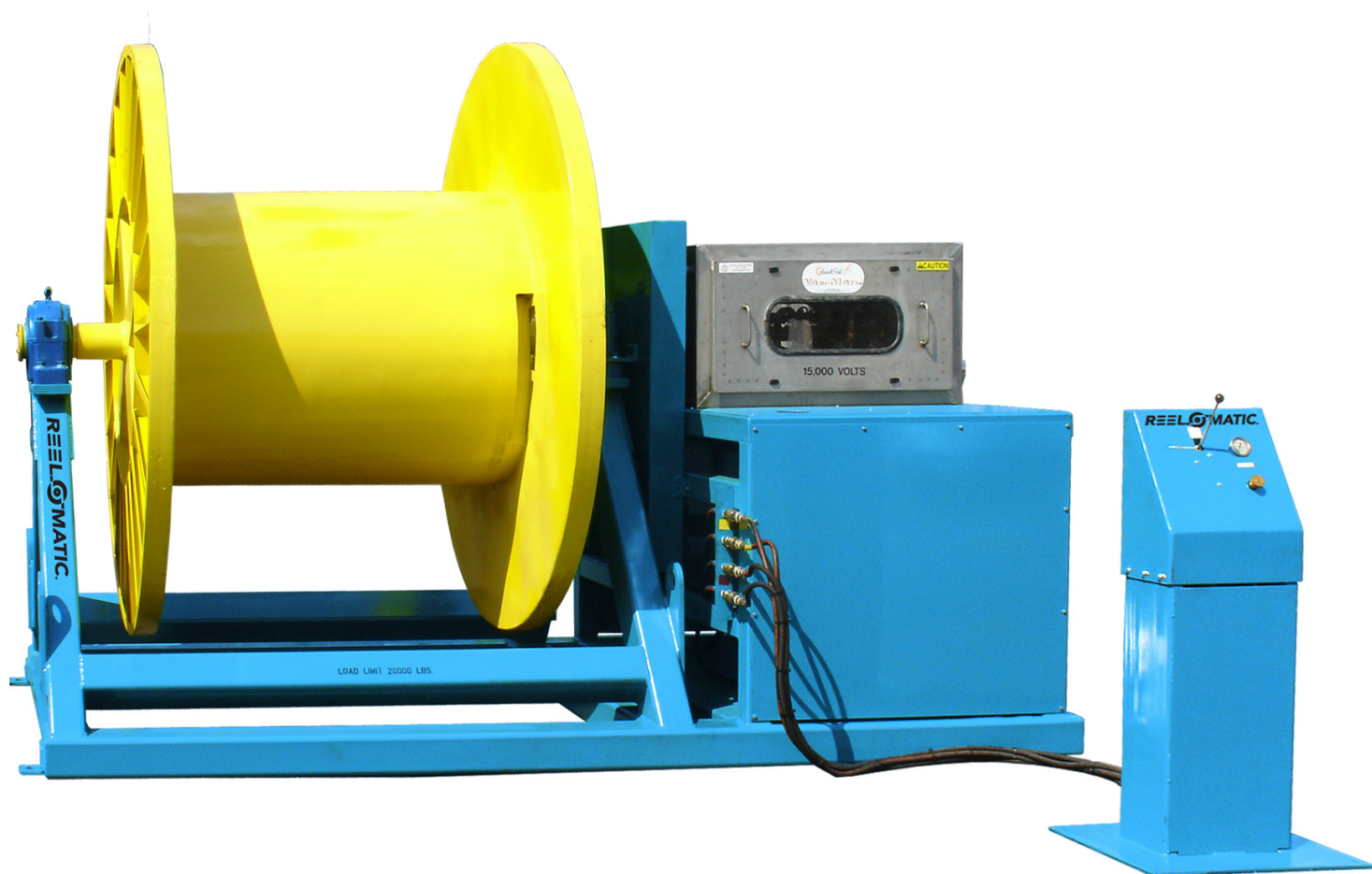


# CABLE REEL STAND

## Custom Powered Cable Reel Stands

Shown below is our Model SP-CRS108 Powered Cable Reel Stand for reels 108" Dia. x 80" wide x 25,000 Lbs. load capacity. This machine was designed for retracting cords in a Marine Application. It is equipped with a 15,000 Volt Slip Ring Assembly, Self Contained Diesel Engine Powered Unit. It also has a Tension Controlled Drive System.



Model SP-CRS108 Powered  
Cable Reel Stand

---

**REELOMATIC**<sup>®</sup>

The Leader in Reeling, Coiling & Processing Solutions

6408 S. Eastern Avenue | Oklahoma City, OK. 73149  
405.672.0000 | 405.672.7200 Fax  
[www.reelomatic.com](http://www.reelomatic.com)

# CABLE REEL STAND

## Custom Powered Cable Reel Stands

### ***INCLUDES:***

- Heavy duty structural steel frame with lifting eyes and bolt-down flanges
- Reel shaft with lifting lugs, dual drive pins, and reel locking collar
- Heavy duty reel (RRP open sided construction) with 7 5/8" arbor hole, 96" O.D. x 72" inside traverse, 48" drum with special drum access for cable ties to center shaft. Capable of holding over 4,000 feet of 2.64" diameter SHD-GC Cable.

### **15,000 Volt, 300 Amp slip ring assembly**

#### ***Includes:***

- 5 pole (3 conductor with two grounds)
- Marine environment package
- Inspection window

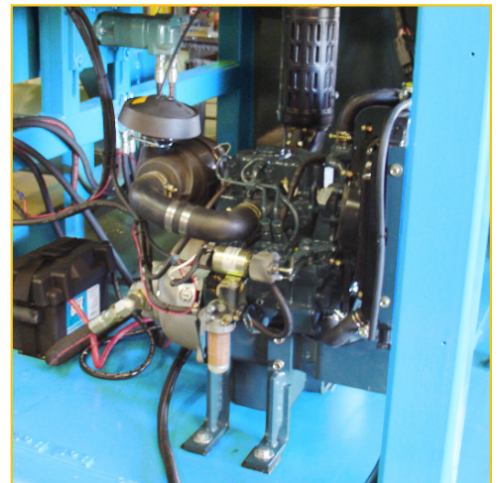
### **16 HP Diesel/Hydraulic Variable Speed Reel Drive, 0-15 RPM, (Capable of 150 FPM at a 48" I.D.)**

#### ***Includes:***

- NEMA 4X Electrical Controls
- Outdoor environment package includes primer, enamel paint, and stainless steel and plated hardware
- Forward/Reverse Manual Hydraulic Speed Control
- Main System Relief with gauge
- Tension Control Reliefs with gauges



**Model SP-CRS108 Powered Cable Reel Stand**



**Diesel Powered**