



Servo Rotary Knife Cutter

5" Dia./ 4.5" x 7.5" cut capacity

Precision on-demand/continuous Servo cutters provide best-in-class features for CUT ENERGY, ACCURACY and REPEATABILITY!

The Reel Power servo rotary knife cutters have many standard features that are options on most ordinary units yet have a comparable price point to "stripped down" models.

Easy to Set-Up, Use and Maintain!

PLC with 7" high resolution color touch screen control makes set-up, recipe management and line control easier than ever!

Powerful Siemens Servo Motor and Drive

Offers greater repeat accuracy and reliability with less maintenance than others.

Seamless Automatic Switching Between Continuous Mode and On-Demand Mode

Changes in line speed/cut rates automatically changes mode of cut, as necessary.

Siemens 7" High Resolution Color Touch Screen PLC

- Recipe management for different cut lengths
- Multiple batch capability
- Timer
- Totalizer
- Line rate indication
- Data logging

User Interface

Provides easy access to four modes of operation, utilizing the encoder in either the on-demand or continuous modes and the end sensor or timer in the on-demand cutting mode.

Safety Interlock

Integrated safety for Cat4/SIL3/PLe.

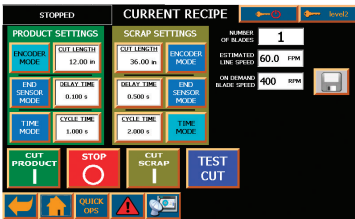


Plus:

- SS blade holder and reservoir plus blade wipe
- Encoder included
- Variable knife speed adjustment for demand mode
- Input for optical or mechanical cut signal with adjustable timed delay
- Ethernet capable
- Standard voltage 480/3/60
- Output for box change or end-of-run signal
- CRS steel busings
- Lowest cost of ownership
- Indicator lights for machine status

Servo Rotary Knife Cutter

Standard Features



Industrial strength Siemens PLC touch screen control, standard.
Standard built-in features include:

- Batch counter
- Timer
- Optical or mechanical cut signal input
- Change cut mode on the fly





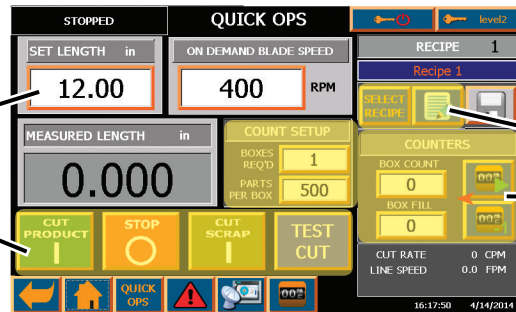
Servo Rotary Knife Cutter

Siemens Color Touch Screen PLC Control Equals Convenience and Reliability

QUICK OPS SCREEN

View real-time performance of cutter

SET LENGTH to be cut
Touch buttons to CUT PRODUCT, STOP, CUT SCRAP or TEST CUT



Select/edit recipe to be cut
Piece & Box Count

HOME SCREEN

Access to all cutter functions

Access to QUICK-OPS screen
Opens RECIPE SELECT screen
Access to SETUP page 1

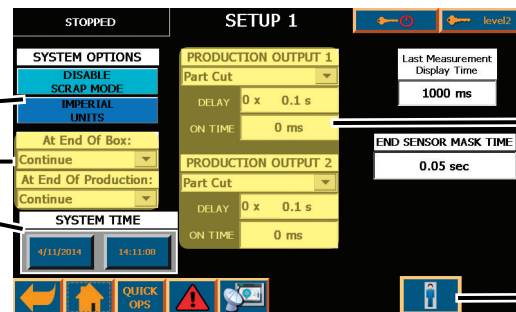


Opens the BATCH counter screen

SETUP 1

Access to SETUP screens

Enable/disable SCRAP MODE
Choose ENGLISH or METRIC units
Set PRODUCTION OUTPUTS
Set correct TIME & DATE



User settable PRODUCTION OUTPUTS

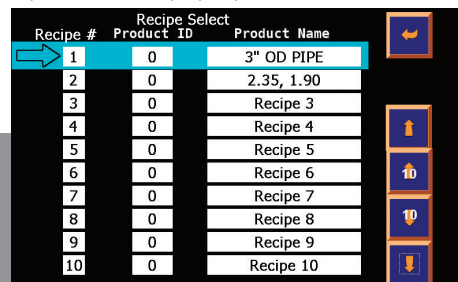
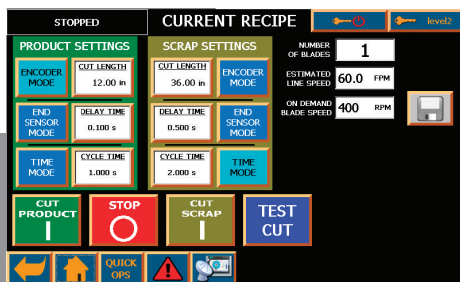
Set USER NAMES & PASSWORDS

RECIPE SELECT

Store and recall up to 30 recipes

Set all parameters for any product and save it to list of recipes

Press any field to select recipe or to edit or enter a recipe using the alpha-numeric pop-up screen



Servo Rotary Knife Cutter

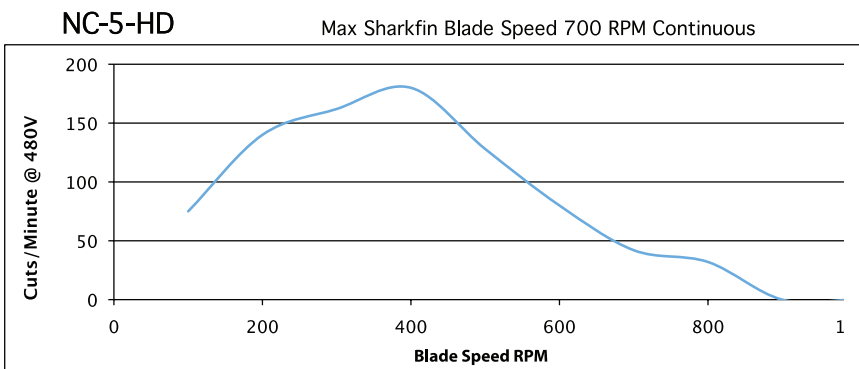
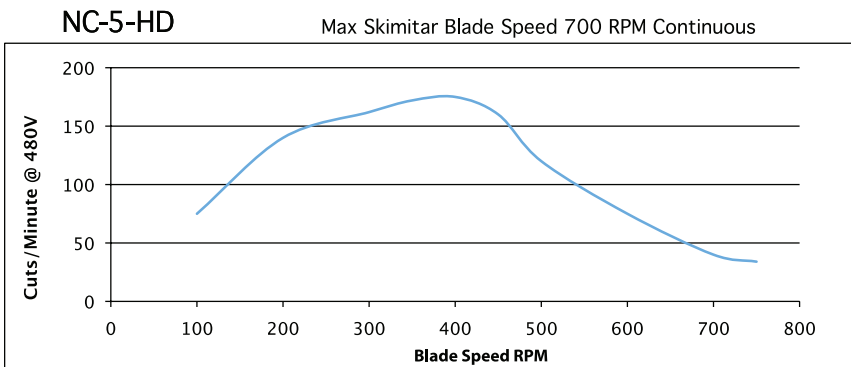
Specifications:

Model Number	NC-5-HD
Bushing diameter	5"
Maximum profile	4.5" x 7.5" / 5" dia.
Power - Hp	11.6
Maximum continuous cuts (1 blade)	700 CPM*
Maximum on-demand cuts (1 blade)	150 CPM @ 400 RPM
Maximum peak torque (in/lb)	4550
Maximum on-demand blade RPM	750**
Cutter Head	16" dia. x 1" Flywheel
Bushing discharge location	Above flywheel center

*Higher rates may be available for certain applications with specific cutter. Single and multiple blade configuration.

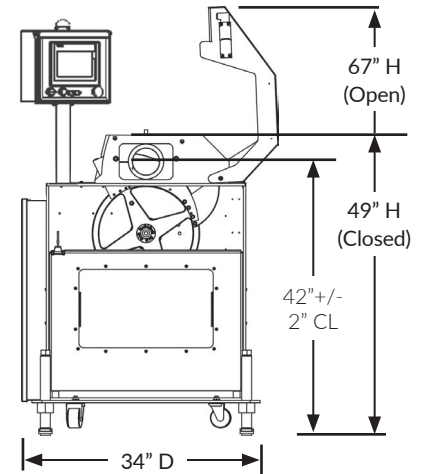
**See chart below for actual CPM @ maximum RPM.

Performance data:

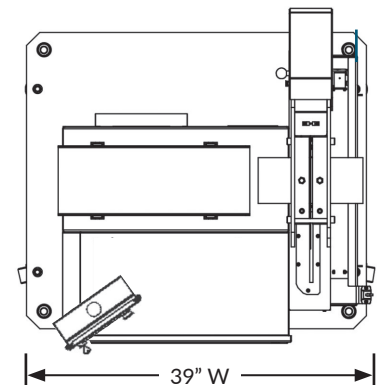


Dimensions:

NC-5-HD



Side View



Top View

Accessories:

- Remote touch screen control at extruder
- Bracket system to interface C-Series cutter and puller
- Common power plug

Options:

- Left to right operational direction
- Cutter stack light/audible alarm
- Stainless steel bushing holder
- Kit, Bushing holder, Rectangular