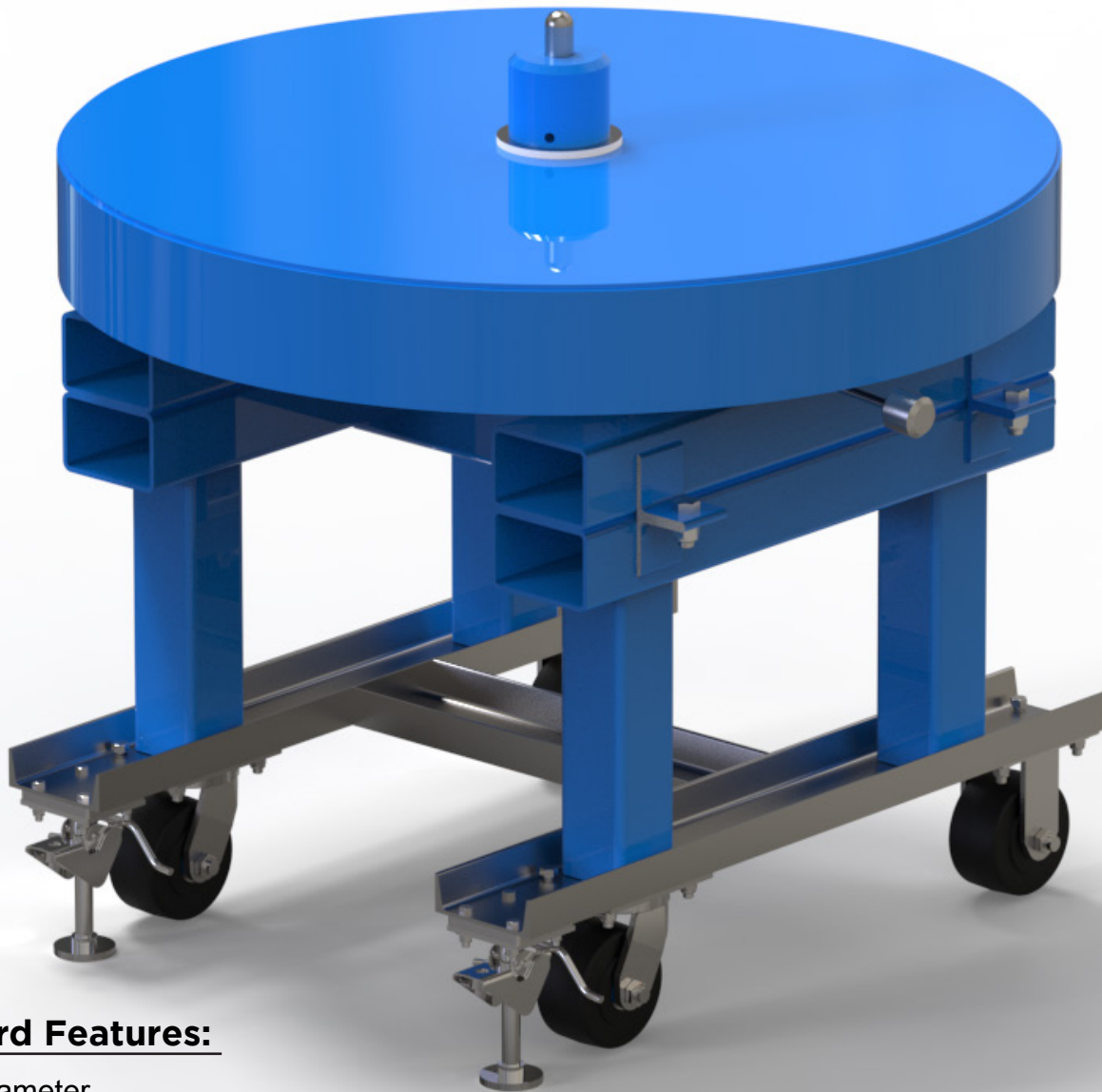


BRT5-003-01



Mobile Broken Reel Turntable



Standard Features:

- 48" Diameter
- Carry up to 5,000 lbs.
- 10" Mechanical Brake
- 1 3/8" Centering Stub Shaft
- Heavy Duty Structural Steel Top
- Mobile Frame
- Safety Skirt
- Total Height of 39"
- 5" Arbor Bushing

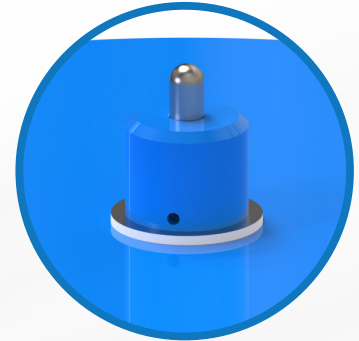
REELPOWER
INDUSTRIAL

5101 S. Council Road, Suite 100 • Okla. City, OK. 73179
405.672.0000 • 405.672.7200 Fax
www.reelpowerind.com

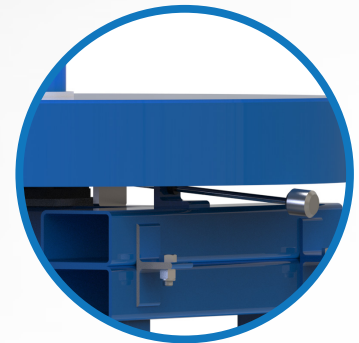
BRT5-003-01



Mobile Broken Reel Turntable



CENTERING STUB SHAFT



ADJUSTABLE TENSION BRAKE

Options:

- Adjustable Tension Brake
- Top Modified to Accommodate Adjustable Coil ID Pins
- Various Size Stub Shaft Adapters
- Top Hat for Coiled Material Pay-Out
- Custom Specifications and Sizes Available



LOCKING ANCHOR